



Where Time and Silence
Define True Luxury



BODHI

Embrace Nirvana



In the heart of one of the last few
luxury spaces in South Chennai rises
a new Bodhi

Built with meticulous detail
and craftsmanship to last the ages
Come experience utmost privacy
with only one living space per floor

Own a piece of this haven and revel in the lush
surroundings of the Theosophical Society.





BODHI



LOBBY



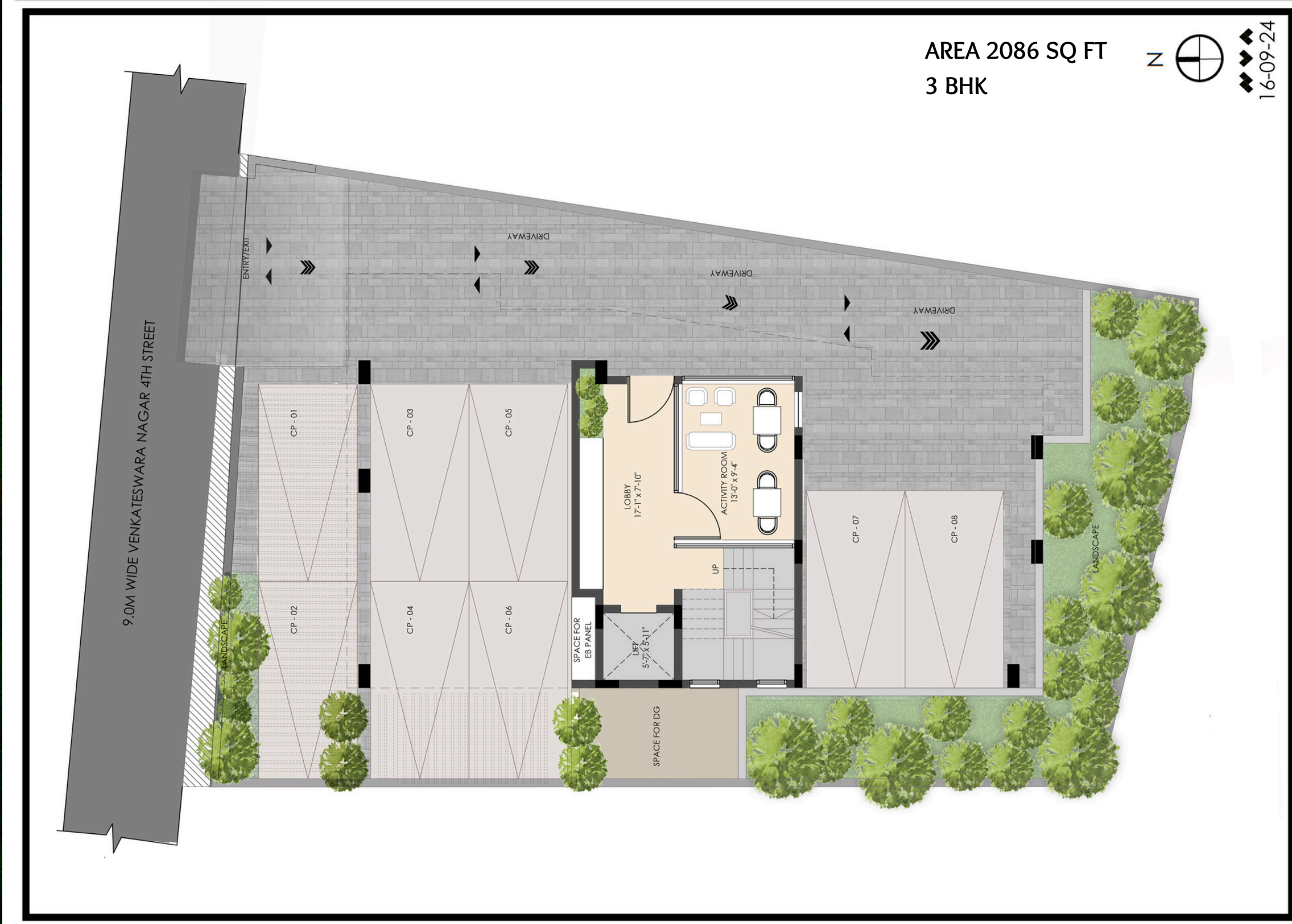


BODHI

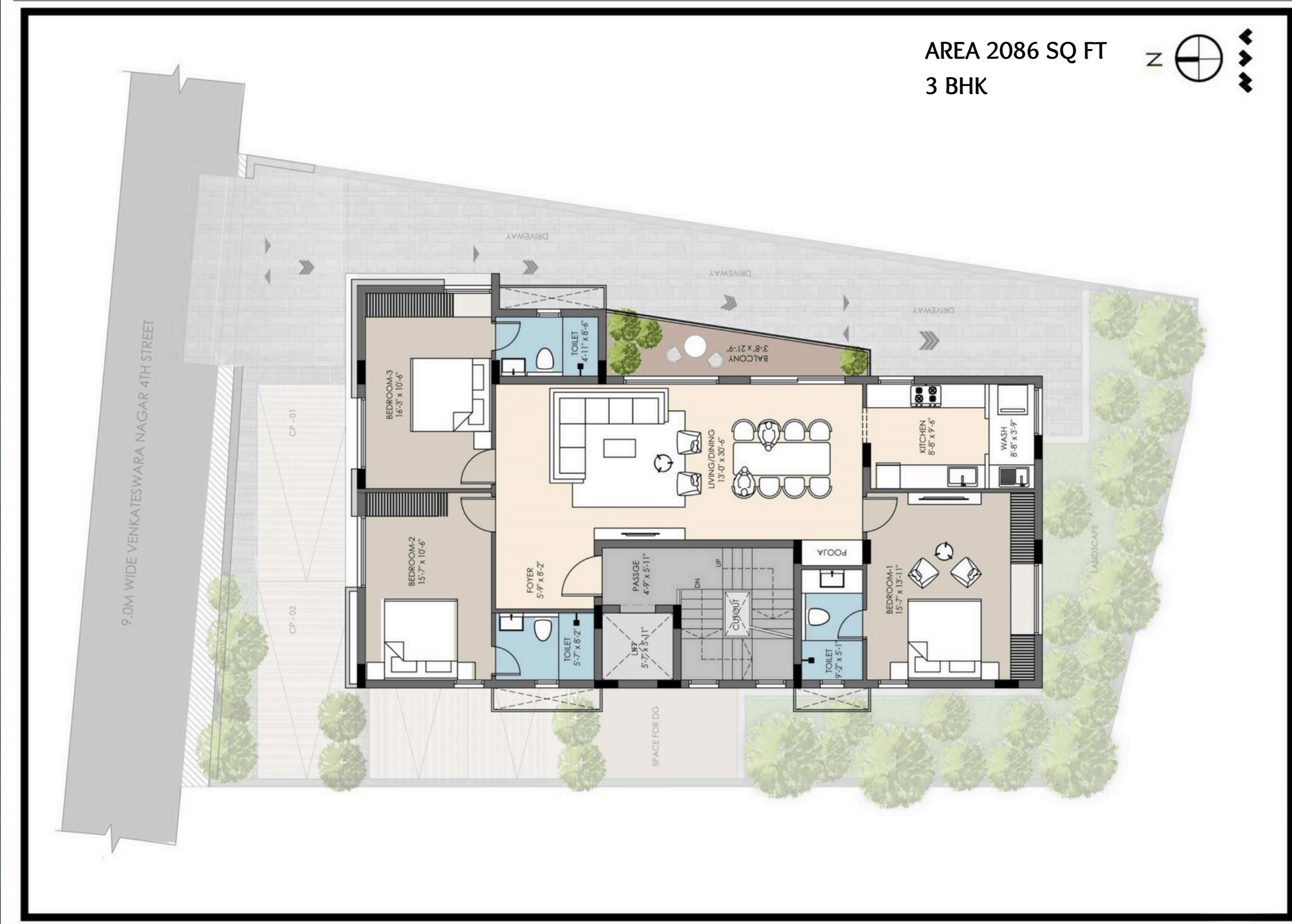


LIVING SPACE

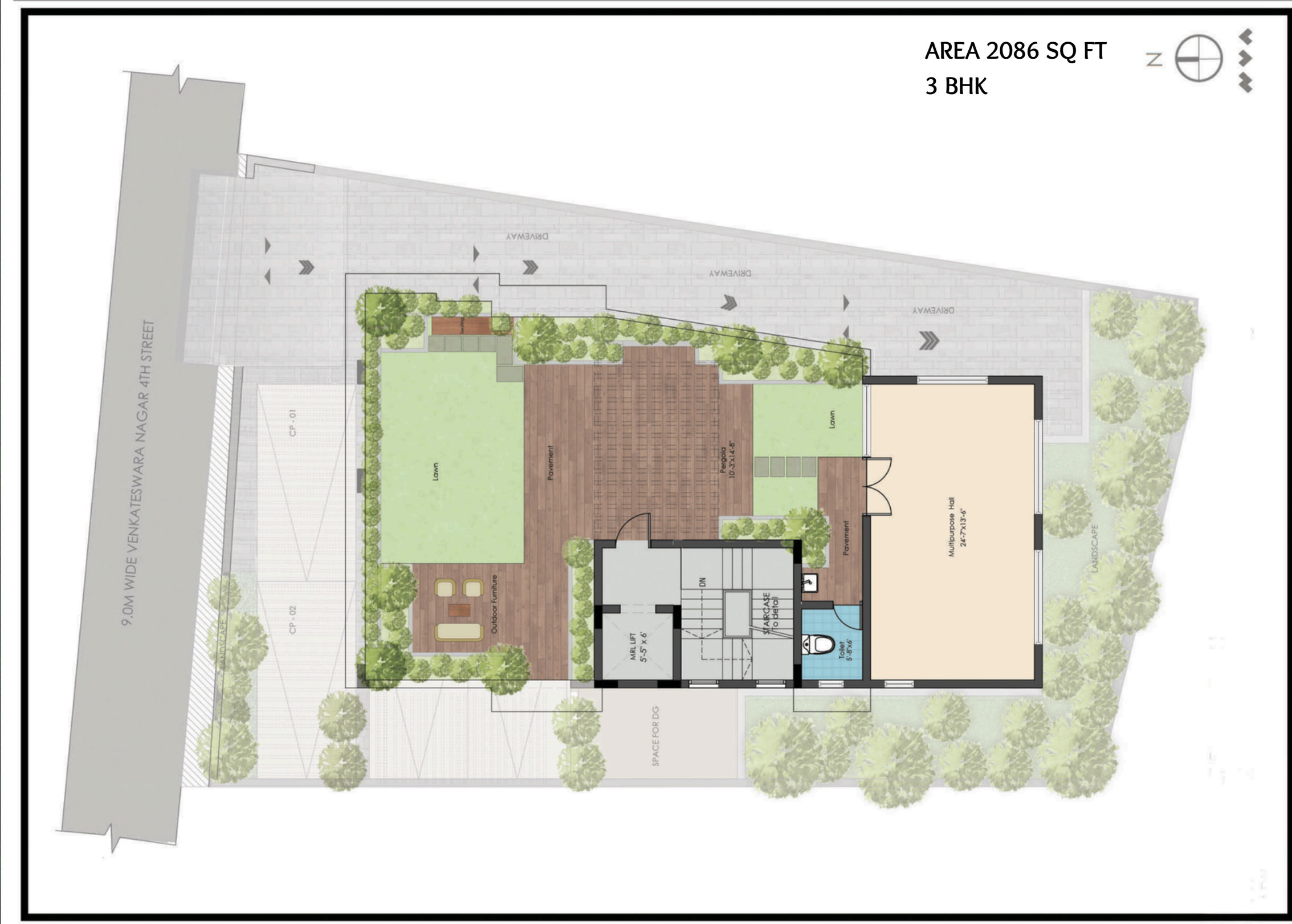




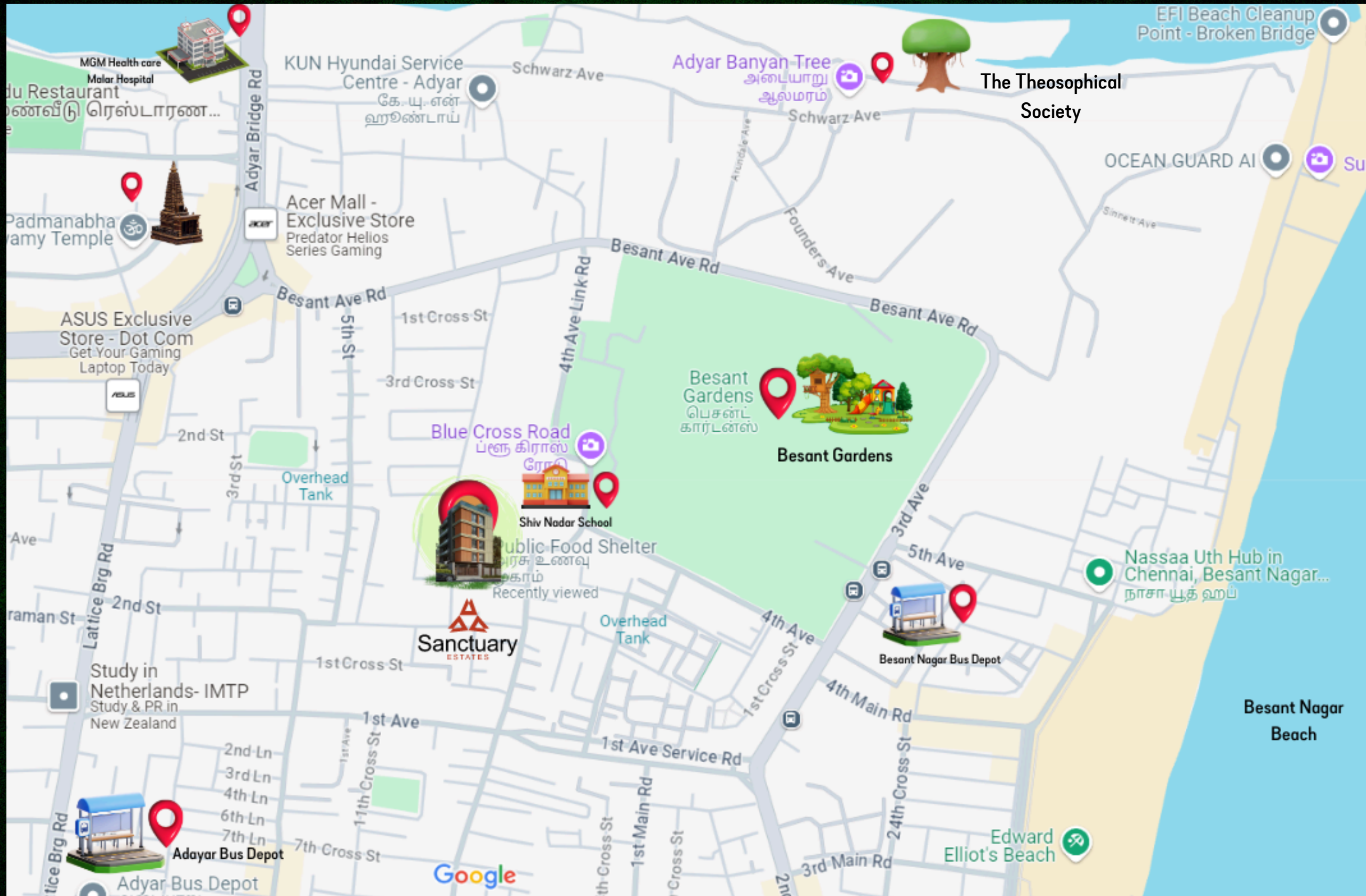
PARKING PLAN



RESIDENCE PLAN














TERRACE PLAN



LOCATION : OLD NO. 9; NEW NO 4, VENKATESHWARA NAGAR 4TH STREET, ADYAR CHENNAI- 600020

DETAIL



	FLOORING	Living & Dining Bedrooms	Imported Marble High-end ceramic tiles
	WALL FINISH	Exterior Interior	Weatherproof emulsion (Texture finish) Premium / Royal Emulsion
	DOORS	Main Door Bed Rooms Bathrooms Door Fittings & Locks	Teakwood door frame with veneer door finish (Termite treated) with Access Control Hardcore flush door with veneer door finish (Termite treated) Anti-rotting door / Laminated flush door Dorma / Hafele / Yale or equivalent
	KITCHEN & UTILITY	Flooring Wall Tiles Counter Top Sink CP Fittings	Anti-skid ceramic tiles Dado tiles upto 2 Ft. height above counter top Premium Granite SS Sink with Drain board Sink mixer - Brush finish
	BALCONY	FLOORING HANDRAIL	Wooden anti-skid tiles Glass
	TOILETS	Flooring Wall Finishes Ceiling CP Fittings & Sanitaryware Hygiene	Anti-skid ceramic tiles Ceramic tiles upto False ceiling Modular False Ceiling Hand shower with mixer and shower cubical in all bathrooms Wall mounted closets with Basin - Catalano / Hansgrohe Separate dry and wet areas
	COMMON LOBBY	Flooring	Granite
	STAIRCASE	Rise and Tread Handrail	Granite MS Railing with enamel paint satin finish
	LIFT		6 Passenger Lift - Fujitech or Equivalent
	DG POWER BACK-UP		Per apartment - 6 KVA load for All lights / AC / Fans / Fridge points Common area - Lighting, Lift, Pumps, CCTV
	ELECTRICAL		AC provision in living, dining & all bedrooms with required cables & switches Modular switches - Panasonic / Legrand or equivalent 3-Phase with individual meters 2-way switches for lights and fans in all bedrooms ELCB Tripper - Siemens or equivalent Video Door Phone & Intercom
	NETWORKING		DTH & network plug-in socket provision in Living / dining and all bedrooms
	SECURITY SYSTEM		Centrally monitored CCTV Cameras for all vantage locations in Ground Floor, Common Area & Terrace
	COMMON FEATURES & AMENITIES		Security Visitors Lobby with Access Control Multi Purpose Hall Landscaped Garden in Terrace & Ground Floor Water points provision in Car Parking EV charging provision in Car Parking Fire Extinguishers in each floor Rain Water Harvesting Toilet for Drivers & Domestic help Digital water meters for all apartments Solar Lighting for common areas

OWNERSHIP



🌱	BOOKING ADVANCE	25 LACS
🌱	SIGNING OF AGREEMENT	30% (LESS 25 LACS)
🌱	COMPLETION OF FOUNDATION	20%
🌱	COMPLETION OF 2ND FLOOR ROOF	10%
🌱	COMPLETION OF STRUCTURE	10%
🌱	COMPLETION OF MASONRY	10%
🌱	COMPLETION OF TILING	10%
🌱	COMPLETION OF JOINERY & PAINTING	5%
🌱	HANDOVER	5%



IT'S TIME TO MAKE THE MAGIC HAPPEN



You completely acknowledge the Disclaimer by accessing or using this leaflet. The Terms and Conditions included in this brochure are subject to change, addition, withdrawal, and/or termination by the business itself. The content in the booklet is provided as general information, and its accuracy and completeness are not guaranteed, either explicitly or implicitly. Furthermore, the images may merely be indicative and not accurately depict actual events.

They may alter at any time, with or without notice.

The company disclaims any liability for claims based on inaccurate information provided and for any damages that may have been incurred. This applies to its promoters, partners, directors, agents, and employees.

We have taken every precaution to guarantee that the information is accurate.

The reader/user is in charge of making sure the content is correct, comprehensive, and up to date.